



**HT-FENCE**

安平县航通网业有限公司

Anping County Hangtong Wire Mesh Co., Ltd

地址：河北省安平县城南保衡路东

ADD: East of Baoheng Road, South of Anping County, Hebei P.R.China

电话 ( Tel ) : +86-318-7516333

Http: //www.wiremesh-fence.com E-mail: info@wiremesh-fence.com

www.hangtongfence.com E-mail: info@hangtongfence.com

www.wirefencing.net E-mail: fence@wirefencing.net



**HT-FENCE**

**航通网业**

HANGTONG WIRE MESH

**Company  
Profile**

---



# Company Profile

## “ Introduction

ANPING COUNTY HANGTONG WIREMESH CO.,LTD is specialized in producing, designing, researching and developing for wire mesh products.Our company founded in 1996, for more than 28 years, HANGTONG became famous brand in wire mesh industry. With our constant abiding by the managing conception in technology and management, We pursue guide in this field.

Hangtong from foundation have always kept the enthusiastically creating and forecasting marketing as our spirit of development. That lies in cooperation of developing department and marketing department. Since 1999, Hangtong's products take up a proportion of international market. There is large quantity wire mesh products has been export Europe, The Americas, Australia, Middle East, Africa, southeast Asia, etc . The special specification greatly meet the need of customers with high quality ,safety ,beauty and convenience installation.

Hangtong people have been making great efforts for every new customer and never snubbing any old friend for more than 20 years. Trust always begin from the first cooperation and satisfaction also appears after the first service. Sincerely quality and mutual benefit are our forever cooperative footstone. Hangtong people will made greater effort for our brighter future.

Now we have two factory in Hebei Province.The total floor area is more than 40,000 square meters, with more than 150 employees currently employed.  
Factory 1:East of Baoheng Road,Anping County,Hengshui City,Hebei P.R. CHINA  
Factory 2:Youzi Industry Zone,Anping County,Hengshui City,Hebei P.R. CHINA

## “ Our Advantage

- We have advanced quality manage system,ISO9001:2008 and CE certification management can let our client satisfied with the top quality of products.
- Our company have excellent equipment: Advanced Polyester Powder coating line for anticorrosive, hot dipped PVC coated line,Advanced laser cutting machine,intelligence large scale welded wire mesh machine, automatic cold forming plate machine to make fence post, and CNC bending machine, ball blasting machine for clean rust, Injection plastic machine for all kinds of accessories of fence, and other kinds of wire mesh making machine.
- Regarding the raw material we all order from famous company in China.
- Powder from AKZONOBEL and PPG, Electrophoretic coating paint from NIPPON.For this credibility material, to ensure our high quality products.
- We have excellent supplier team for drawing wire, galvanized ,that can exactly control the wire diameter and galvanized quality.
- Our company have over 10 senior engineers. Have enough capability to R&D and design in our products by ourself. In that case we keep our guider in this industry.
- There are more than 150 excellent staff team. To ensure our top quality of products and best service.

## “ Main Products.

- **Gabion series:**  
 Welded gabion barrier with non-woven geotechnical,welded gabion box,wovenGabion.
- **Wire Mesh Fencing series:**  
 High security fence(358),Express way fencing, Rail way fencing,Airport fencing, Sport field fencing, Double wire fence,Garden fence,Pressed spear fence.
- **Border Fence series:**  
 High security fence type,Concertina wire type,Barrier with High security fence type.
- **Palisade Fence series:**  
 W Palisade fence,D Palisade fence,Steel Angle Palisade fence,Palisade fence for telecom station
- **Barbed wire series:**  
 Razor wire , Electrophoretic paint razor wire ,Barbed wire , Electrophoretic paint barbed wire.
- **Temporary fencing series:**  
 Australia standard temporary fence, Canada standard temporary fence,Chain link temporary fence, Swimming temporary fence, Temporary barrier and so on.
- **Mesh series:**  
 Chain link fence, Hexagonal wire mesh , Gabion box , welded wire mesh , stainless wire mesh.

## Product Pictures



Defence Barrier



Welded Mesh Fence



Temporary Fence



Palisade Fence



High Security Fence



Steel Fence



Concertina Wire



Chain Link Fence

## “ Part Project

- 1 200km chain link fence in UAE for Al-Houbara Protected Area Fence,Client is China company
- 2 10km Anti climb fence for Prison at Trinidad and Tobago ,Client from USA
- 3 16.5km Anti climb in Congo,Client is Ivanhoe Mines Ltd(Canada)
- 4 17.7km border anti climb fence for Jordan and Syria,Client is CDC(Jordan)
- 5 6km Oil plant anti climb security fence project in Kenya and PNG ,end user is Exxon Mobil Corporation(USA)
- 6 500Tons concertina razor wire for 400km border security of Slovenia,Client is PALECO d.o.o.(Slovenia)
- 7 2000M Anti Climb Fence for UN on South Sudan,it is series project,this is the first phase.
- 8 80km border security fence for China and Myanmar,Local client(China)
- 9 4.7KM Anti Climb fence in Guinea Aluminium Mines,Client is Emirates Global Aluminium(UAE)
- 10 12KM High security fence in Qatar,the client is CLIC(Qatar)
- 11 8km Anti climb fence in Congo,Client is Ivanhoe Mines Ltd(Canada)
- 12 12KM Airport Fence to Tanzania,Client is agent in Tanzania
- 13 5km Clearvu Type Anti climb fence for Oil plant,end user is Exxon Mobil Corporation(USA).
- 14 33km Anti climb fence in Congo,Client is Ivanhoe Mines Ltd(Canada)

## Project Pictures



Prison Security USA

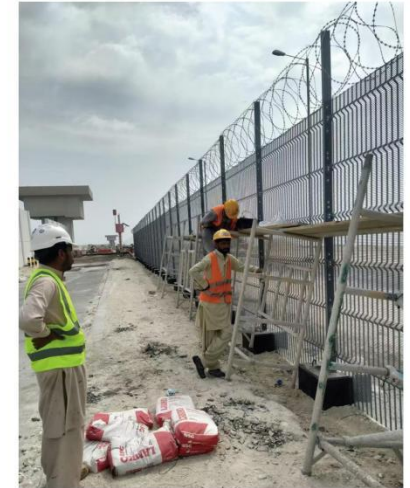


Protected Area UAE

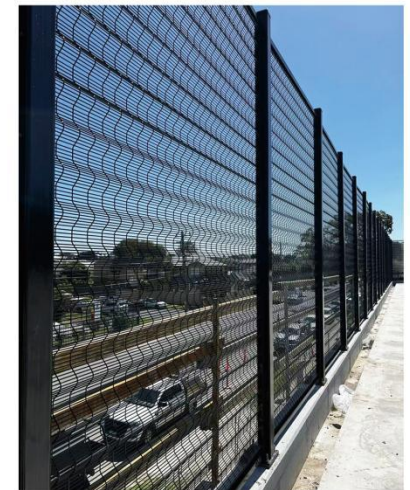


Airport fence Tanzania

High Security Fence Qatar



High Security Fence Australia





**Anping County Hangtong Wire Mesh Co.,LTD.**  
Quality is our culture,nice fence serve global customer.



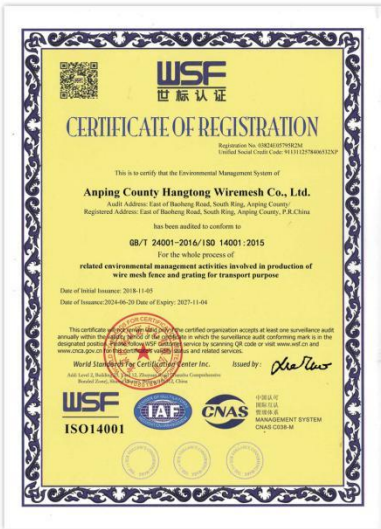
**Anping County Hangtong Wire Mesh Co.,LTD.**  
Quality is our culture,nice fence serve global customer.



# CERTIFICATION

Hangtong is a standard company which has got the ISO9001-2008,CE, Environment Assessment,etc The New Environmental Management ISO14001, Occupational Health&Safety Management OHSAS18001.

# Factory Total 40000 m<sup>2</sup>



## “ Our advanced Powder coating line



## “ 3D Panel Fence



## “ Regular Feature

- ❖ Posts can be customised for Barbed wire,Razor wire
- ❖ Mesh100 x50mm,200 x 50mm,4mm or 5mm wire
- ❖ V mesh design offers strength and security without an intimidating appearance
- ❖ Unique vandal-proof panel to post fixings
- ❖ 2 - 5 reinforcement folds according to height
- ❖ Our panels are made from galvanized wires, then plasticized with polyester after application of an adhesion layer.

## “ Material

- Panel wire:Q195 Low carbon wire
- Post:Q235,345 Steel tube
- Coating:pre galvanized wire and tube:zinc coating 60g/㎡ (general) ,275g/㎡ (High) with polyester coating 76μm,100μm
- Color: Green RAL 6005 - Black RAL 9005 - Grey RAL 7016 - White RAL 9010
- Other colours : on request.

## “ Popular size(Allow customization/OEM)

Panel size				Post	No of V beam (pcs)
Width(mm)	Height(mm)	Wire(mm)	Mesh(mm)		
2500	1530	4/5	100×50 200×50	40×60×1.5/2.0×2000 60×60×1.5/2.0×2000	3
2500	1730	4/5		40×60×1.5/2.0×2300 60×60×1.5/2.0×2300	3
2500	1930	4/5		40×60×1.5/2.0×2500 60×60×1.5/2.0×2500	3
2500	2030	4/5		40×60×1.5/2.0×2500 60×60×1.5/2.0×2500	4
2250/2500	2430	4/5		60×60×1.5/2.0×3000 80×80×1.5/2.0×3000	4
2250/2500	3000	4/5		60×60×2.0/2.5×3000 80×80×2.0/2.5×3000	5

## “ Panel and post connect way



## “ Application

Home security,Public space,Building,Factory,Industry security,Airport,Prison



## “ Clear View Fence



## “ Regular Feature

- ❖ Anti-climb, anti-cut and 85% - 90% see-thru.
- ❖ V mesh design offers strength and security without an intimidating appearance
- ❖ Posts can be customised for Barbed wire,Razor wire
- ❖ I beam and square post choose to adapt to different security grade,Also special type post allow
- ❖ Various finished to adapt to different anti corrosion requirements
- ❖ Allow razor spike on the fence top,anti climb on top side

## “ Material

- Panel wire:Q195 or Q235 Low carbon wire
- Post:Q235,345 Steel tube,I beam
- Coating:pre galvanized wire and tube:zinc coating 60g/㎡ (general) ,275g/㎡ (High) with polyester coating 76μm, 100μm;Hot dipped galvanized:Zinc coating 60μm,85μm,etc
- Color: Green RAL 6005 - Black RAL 9005 - Grey RAL 7016 - White RAL 9010
- Other colours : on request.

## “ Popular size(Allow customization/OEM)

Panel size				Post	No of V beam (pcs)
Width(mm)	Height(mm)	Wire(mm)	Mesh(mm)		
2500/3000	1800	3/4 or 4/4	76.2×12.7 76.2×25 76.2×50	60×60×2.0×2400 75×75×2.0×2400	3
2500/3000	2100	3/4 or 4/4		60×60×2.0×2700 75×75×2.0×2700	3
2500/3000	2400	3/4 or 4/4		60×60×2.0×3000 75×75×3.0×3000	3/4
2250/2500	3000	3/4 or 4/4		75×75×3.0×3600 80×80×4.0×3600	5

## “ Choose Idea

Clearview Fence Features & Types	BASIC SECURITY	PRO SECURITY	PREMIUM SECURITY
Aperture Sizes	76.2mm x50mm	76.2mm x25mm	76.2mm x12.7mm
Heights(m) 1.8, 2.0, 2.2, 2.4,3.0	✓	✓	✓
Unobstrusive Clear View Aesthetics	✓	✓	✓
Cut Resistant Strengthened welding	✓	✓	✓
Security Ad-ons Spikes (ribbed/fared) Electric Fence & Razor	✗	✓	✓
Anti-climb Properties may be added	✗	✗	✓

## “ Application

Public space,Building,Factory,Industry security,Airport,Prison,where need high security



## Palisade Fence



## Regular Feature

- ❖ Bolt-on Palisade fencing can be installed by semi-skilled staff as there is no welding on site.
- ❖ Bolt-on Palisade fencing is easily transported. The components are packed in bundles.
- ❖ Bolt-on Palisade fencing which has been hot-dip galvanized is not compromised by welding on site.
- ❖ Bolt-on Palisade fencing can be easily moved to another fence line.
- ❖ HT-Fence Palisade fencing is modular.Sections can be replaced easily if damaged by vehicles,falling trees,etc.

## Material

- Pale use mild steel plate(black or galvanized)
- Horizontal rails:Standard 50×50×5/6mm angle rail
- Post use I beam(100×55mm,100×68mm,150×75mm)
- Fixings:Steel plate:40×8×150mm,Other: on request.
- Bolts:M8×30,M12×30 anti-vandal steel or stainless steel
- Surface:Galvanized or galvanized then powder coating finished
- Steel grade can be chose.
- Color: Green RAL 6005 - Black RAL 9005 - Grey RAL 7016 - Other colors : on request.
- Comply for BS1722-12

## Popular size(Allow customization/OEM)

Panel size		W Pale section:70mm		Rails	Post	
Fence heights	Post Distance	Pale Thickness	Qty:Pale	Cross Rails	Height	I Post Section
1.8m	2.75m	2/2.5/3mm	17pcs	50×50×5/6mm	2400	100×55mm
2.1m	2.75m	2/2.5/3mm	17pcs	50×50×5/6mm	2900	100×55mm
2.4m	2.75m	2/2.5/3mm	17pcs	50×50×5/6mm	3200	100×55mm
3.0m	2.75m	2/2.5/3/3.5mm	17pcs	50×50×5/6mm	3900	100×55mm
		W Pale section:62mm				
1.8m	2.75m	1.5/2/2.5mm	17pcs	40×40×4mmor50×50×5mm	2400	100×55mm
2.1m	2.75m	1.5/2/2.5mm	17pcs	40×40×4mmor50×50×5mm	2900	100×55mm
2.4m	2.75m	1.5/2/2.5mm	17pcs	40×40×4mmor50×50×5mm	3200	100×55mm
3.0m	2.75m	1.5/2/2.5mm	17pcs	40×40×4mmor50×50×5mm	3900	100×55mm

## Choose Idea



Pointed



Triple Pointed



Rounded



Rounded & Notched

Examples of standard colours for powder coated steel fencing products, a vast range of special colours is also available



RAL 9005  
black



RAL 6005  
green



RAL 5010  
blue



RAL 9016  
white



RAL 3020  
red

## Application

Home security,public space,building,factory,industry security,airport,prison



## “ Double Wire Fence/2D Fence



## “ Regular Feature

- ❖ Mesh sizes are 200x50mm with 1x6mm&1x5mm vertical and 2x8mm&2x6mm horizontal wire.
- ❖ Posts can be concreted in, base placed, cranked, face fixed or vertically extended.
- ❖ Supplied with full length clamp bars or clips.
- ❖ System is easy to install and can be stepped, helping the fence line follow the contours of the ground.
- ❖ The system can be supplied complete with gates to suit.

## “ Advantage

- ❖ High security fence, anti-climb and anti-cut
- ❖ Flat panel that gives improved aesthetic appearance
- ❖ Maximum strength and security,High levels of rigidity
- ❖ Excellent through vision
- ❖ Wide range of colour options

## “ Material

- Panel wire:Q195 Low carbon wire
- Post:Q235,345 Steel tube
- Coating:pre galvanized wire and tube:zinc coating 60g/㎡ (general) ,275g/㎡ (High) with polyester coating 76μm,100μm
- Color: Green RAL 6005 - Black RAL 9005 - Grey RAL 7016 - White RAL 9010
- Other colours : on request.

## “ Specifications

Panel size				Post	
Panel heights	Panel Width	Wire	Mesh Holes	Height(mm)	Post Section
1030mm	2.5m	6+5+6mm	50×200mm	1600	40×60mm 60×60mm 80×80mm
1230mm	2.5m			1800	
1830mm	2.5m	2400			
2030mm	2.5m	2600			
2430mm	2.5m	3000			

Above are general specification,others are available.

## “ Panel and post connect way



## “ Application

It is often used in villa,park,industrial plants,garden,isolated of road,school,station,residence community,etc.



## “ Tubular Fence



## “ Regular Feature

- ❖ Available as any high , the fencing can be supplied as client requirements.
- ❖ Width from 2100----2600 all available .
- ❖ Rail can making 2 pcs / panel,3pcs/panel ,4pcs/panel.
- ❖ Decorative accessories on rails available.
- ❖ Pale welded face on rail,or punched through rail and welded,or using specialized clamp to connected.

## “ Material

- Pale use galvanized mild steel tube
- Horizontal rails:Standard 40×40×1.6/2.5 or40×40×1.2/1.6 mm steel tube
- Post use (60×60×2.0mm ,65×65×2.0mm, 75×75×3.0mm,80×80×3.0mm)
- Fixings: steel brackets or aluminum brackets.
- Surface: Fence can use pre hot dipped galvanized tube fabricate and after several clear procedure. We use famous international powder (AkzoNobel)sprayed.In that case can got strongly resist the corrosive and ultraviolet radiation. Double coating layer high quality anti corrupt . The longevity will 10 years long.

## “ Specifications

Panel size		Pale: 19×19,25×25		Rails	Post	
Fence height(mm)	Fence width(mm)	Pale Thickness(mm)	Qty:Pale (pcs)	Cross Rails (mm)	Height (mm)	Square Post Section(mm)
1800	2400	1.0/1.2/1.6	18	40×40×1.0/1.2/1.6	2700	65×65 ×3.0
2100	2400	1.0/1.2/1.6	18	40×40×1.0/1.2/1.6	3000	65×65 ×3.0
2400	2400	1.0/1.2/1.6	18	40×40×1.0/1.2/1.6	3300	65×65 ×3.0
2700	2100	1.0/1.2/1.6	15	40×40×1.0/1.2/1.6	3600	75×75 ×3.0
3.0m	2.75m	1.0/1.2/1.6	17	40×40×1.0/1.2/1.6	3900	75×75 ×3.0

Above are general specification,others are available.

Pale punched through rail

Panel size		Pale: 19×19,25×25		Rails	Post	
Fence height(mm)	Fence width(mm)	Pale Thickness(mm)	Qty:Pale (pcs)	Cross Rails (mm)	Height (mm)	Square Post Section(mm)
1800	2400	1.0/1.2	18	40×40×1.0/1.2/1.6	2700	65×65 ×2.0
2100	2400	1.0/1.2	18	40×40×1.0/1.2/1.6	3000	65×65 ×2.0
2400	2400	1.0/1.2	18	40×40×1.0/1.2/1.6	3300	65×65 ×2.0
2700	2100	1.0/1.2	15	40×40×1.0/1.2/1.6	3600	65×65 ×2.0

Above are general specification,others are available.

## “ Application

It is often used in Villa, Garden, Residence community , industry area and so on.



## “ Pyramid mesh fence



## “ Regular Features

- ❖ Mesh sizes are 200x50mm with 1x6mm&1x5mm vertical and 2x8mm&2x6mm horizontal wire.
- ❖ Posts can be concreted in, base placed, cranked, face fixed or vertically extended.
- ❖ System is easy to install and can be stepped, helping the fence line follow the contours of the ground.
- ❖ The system can be supplied complete with gates to suit.

## “ Advantage

- ❖ High security fence, anti-climb and anti-cut
- ❖ Flat panel that gives improved aesthetic appearance
- ❖ Maximum strength and security,High levels of rigidity
- ❖ Excellent through vision
- ❖ Pyramid head design

## “ Specifications

Panel size				Post	
Panel heights	Panel Width	Wire	Mesh Holes	Height(mm)	Post Section
886mm	2.015m	5+5+5mm 6+5+6mm 8+6+8mm	50×200mm	1300	60×60mm 75×75mm 80×80mm
1086mm	2.015m			1600	
1286mm	2.015m			1700	
1486mm	2.015m			1900	
1686mm	2.015m			2100	
1886mm	2.015m			2400	

Above are general specification,others are available.

## “ Material

- Panel wire:Q195&Q235 Low carbon wire
- Post:Q235,345 Steel tube
- Panel wire and post material used hot dipped galvanized material, Or black material
- Bolts:M8 anti-vandal steel or stainless steel
- Surface:Galvanised or galvanised then powder coated&pvc coated finished
- Steel grade can be chose.
- Powder from AKZONOBEL

## “ Application

It is often used in villa,park,industrial plants,garden,isolated of road,school,station,residence community,etc.



## “ Concertina Razor wire



## “ Regular Features

- ❖ Various type can be chose,concertina coil,flat coil,stright razor wire,single coil,etc
- ❖ Various material can be chose,galvanized,stainless steel,with various color.
- ❖ Non-climbing
- ❖ Quick and easy for installation

## “ Four popular type for application

**Single Coil Razor Wire Concertina:** Hot dipped galvanized steel plate and strip processed razor wire coils. Extended in spiral type to form a temporary obstacle. No clips required for this type.

**Large Coils Crossed Concertina Wire:** Crossed spirals of razor wire clipped together to make better security fencing than the single coils razor tape lines.

**Y Post Supported Concertina Wire Fences:** Concertina wire mounted on top of Y fence post to make an obstacles barriers.

**Razor Wire Mobile Obstacle Barriers / Military Use Concertina Wire:** Concertina wire or crossed razor wire has two features suitable for military uses. First, it is quick and easy for installation as mobile security barriers. Speed and time is very important in wars or military uses. Only three men are needed to be set up and retrieval of the razor wire obstacles, fences, a saving of human resources.Second, the razor wire barrier does not rely on any mechanical power, electricity, battery, motor, or engines. It forms effective barrier to prevent possible mechanical problems caused by mechanical failure, battery shortage, the electrical failure, or engine failure.

## “ Specifications

Razor blade type specification						
Model	Blade Style	Thickness(mm)	Wire(mm)	Barb Length(mm)	Barb Width(mm)	Barb Spacing(mm)
BTO-12		0.5±0.05	2.5±0.1	12±1	15±1	26±1
BTO-15		0.5±0.05	2.5±0.1	18±1	15±1	33±1
BTO-22		0.5±0.05	2.5±0.1	22±1	15±1	34±1
BTO-30		0.5±0.05	2.5±0.1	30±1	18±1	45±1
CBT-60		0.6±0.05	2.5±0.1	60±2	32±1	100±2
CBT-65		0.6±0.05	2.5±0.1	65±2	21±1	100±2

Standard Razor wire Production				
Outside Dia.	Loops	Standard length covered Per Coil	Blade Type	Type
450mm	33	7-8m	CBT-60,65	Single Coil
500mm	56	12-13m	CBT-60,65	Single Coil
700mm	56	13-14m	CBT-60,65	Single Coil
960mm	56	14-15m	CBT-60,65	Single Coil
450mm	56	8-9m	BTO-12,15,22,30	Concertina type
500mm	56	9-10m	BTO-12,15,22,30	Concertina type
600mm	56	10-11m	BTO-12,15,22,30	Concertina type
700mm	56	10-12m	BTO-12,15,22,30	Concertina type
800mm	56	11-13m	BTO-12,15,22,30	Concertina type
900mm	56	12-14m	BTO-12,15,22,30	Concertina type
960mm	56	13-15m	BTO-12,15,22,30	Concertina type
980mm	56	14-16m	BTO-12,15,22,30	Concertina type

## “ Material

- Steel plate used galvanized or stainless steel material,zinc weight and ss grade can be chose
- Wire used galvanized or stainless steel wire,zinc weight and ss grade can be chose
- Clips used galvanised or stainless steel,zinc weight and ss grade can be chose
- Surface:Galvanized or stainless steel, then powder coating Electrophoretic paint.
- Above all materail from famous factory.
- Powder from AKZONOBEL,Paint from Nippon.

## “ Application

It is used as security fencing and isolation for gardens, residences, military sites,border protection,prison,airport and other sites requiring high security.

## “ Chain Link Fence



## “ Regular Feature

The HT-FENCE Fence manufacturer have produced chain link fence for near 20 years. This fence is adopted high quality carbon steel rod to draw wire. After hot dipped galvanized or PVC coating, Then weaved by automatic chain link machine. The mesh is diamond type, also this chain link fence is called diamond wire fence. The mesh size can be made as requirments (usual range is 5×5 mm - 100×100 mm).

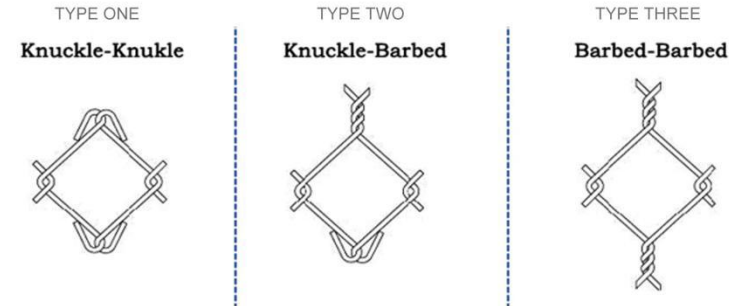
There are variety of chain link fence which the materials are different.

- PVC coated wire chain link fence
- Galvanized wire chain link fence
- Galvanized&PVC coated wire chain link fence

## “ Specifications

Wire Dia	Mesh	Length	Height	Post's Height	Suitable Post
Galvanized coated wire diameter: 3.0-5.0 mm	30*30mm	10m	1200mm	1600mm	Round tube :Φ 42, Φ 48, Φ 60, Φ 72, Φ 89, Φ 114mm Square tube :60*60,80*80mm Angle post:50*50mm Post thickness is 1.5-6.0mm
	35*35mm	15m	1500mm	1900mm	
	40*40mm	20m	1800mm	2200mm	
PVC coated wire diameter: 3.0-5.0mm	50*50mm	25m	2000mm	2400mm	
	60*60mm	30m	2500mm	3000mm	
	75*75mm	or longer	3000mm	3600mm	

We have knuckled bardn or twisted barb On the top of chain link mesh. Please check the following types:



This chain link mesh usually packaged into a compress roll so that reduce the volume when transportation. When use them, they will be extended and fixed with fence post(usual post size is Φ42, Φ48, Φ60, Φ72, Φ89, Φ114.and 60\*60,80\*80square tube, Angle post etc, The thickness is 1.5-6.0mm). This chain link fence mainly used for tennis courts,soccer field,volleyball courts. Can meet the needs of schools,Institutions,enterprises fitness facilities.It is especially suited for sport area between buildings because of neat appearance,strong anti-impact and flexibility.

## “ Material

PVC coated wire, Galvanized wire, Galvanized&PVC coated wire, Aluminium alloy wire, Stainless steel wireRound tube, square tube, Angle post

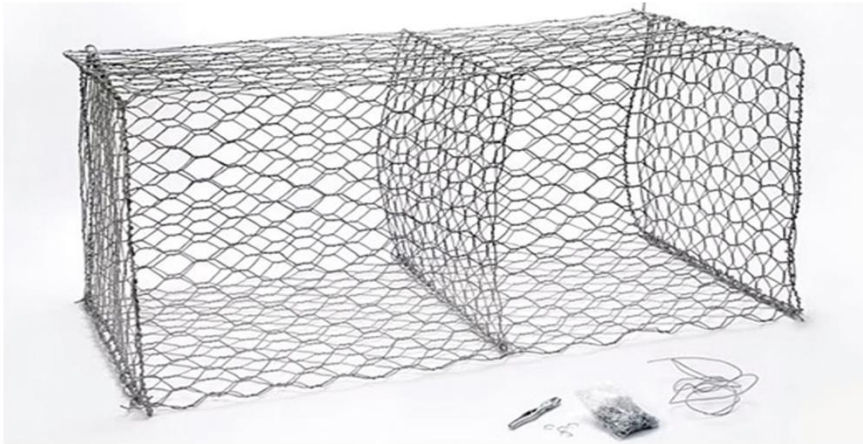
Surface: PVC coated, electro or hot dipped galvanized

## “ Application

It is used as security fencing and isolation for gardens, residences, military sites,border protection,prison,airport,solar panel security and other sites requiring high security.



## “ Gabion basket



## “ Regular Feature

Gabions are wire mesh boxes, containers or baskets filled with rock to prevent soil erosion and to retain/contain soil particles.They are used mostly in the civil engineering industry, especially in the construction of roadway drainage structures. Recently however, due to the environmental benefits associated with gabions, they are being used in many various applications and industries.

The wire used to manufacture double twisted gabion wire mesh is soft annealed, mild steel wire provided with heavy zinc coating as per EN 10244/ASTM A 641 to prevent corrosion. In case of use in aggressive environments, it is further extruded with 0.5mm thick PVC Coating. The PVC coating is UV stabilized as per ASTM A 975.

## “ Specifications

Woven Gabion Specification			
Gabion size(m)	Mesh opening	Wire diameter	Surface treatment
2×1×0.5	60 x 80mm	2.2-4.0mm	Galvanized
2×1×1.0		2.2-4.0mm	
3×1×0.5		2.2-4.0mm	
3×1×1.0		2.2-4.0mm	
4×1×1.0		2.2-4.0mm	
6×1×1.0		2.2-4.0mm	
2×1×0.3(Mattress)	80 x 100mm	2.2-4.0mm	Galvan
3×1×0.3(Mattress)	80 x 120mm	2.2-4.0mm	PVC coated
	100 x 120mm	2.2-4.0mm	PE coated
	120 x 150mm	2.2-4.0mm	
Other size can be customized			

## “ Features

- ❖ Strength and flexibility.
- ❖ Good decorative,not only used on river area,but also can used on decorative wall
- ❖ The double twisted hexagonal mesh means that the wire will not unravel when cut which allows the gabions to be easily cut and shaped to suit project requirements.
- ❖ Strong anti-corrosion:heavy galvanized wire or Galfan wire,or glued PVC coated wire,PE coated wire to make the gabion wire mesh can more improve capacity of anti-corrosion,can adapted to sea environment.
- ❖ Economy: Wire mesh gabions are less expensive than most construction materials. Graded stone fill is usually locally available. Waste materials such as crushed concrete may be specified in place of stone.

## “ Material

Wire used low carbon steel wire,wire diameter2.2-4.0mm

Surface:Galvanised or galfan or PVC coated and PE coated finished

The wire used to manufacture double twisted gabion wire mesh is soft annealed, mild steel wire provided with heavy zinc coating as per EN 10244/ASTM A 641 to prevent corrosion. In case of use in aggressive environments, it is further extruded with 0.5mm thick PVC Coating. The PVC coating is UV stabilized as per ASTM A 975.

## “ Application

It is often used in earth movement and erosion, river control, reservoirs, canal refurbishment, landscaping and retaining walls.,gabion umbrella stand,etc.Gabions are also used for erosion control, bank stabilisation, channel linings, and weirs.



## “ Temporary Fence

### “ Features

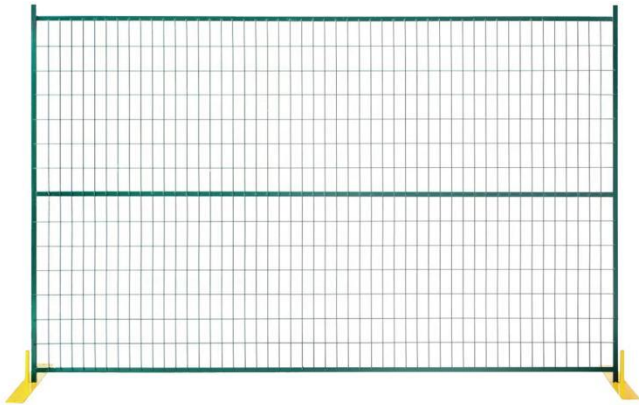
- ❖ Removal with detachable feet.
- ❖ Easy to erect and take down.
- ❖ With good applicability even though on rugged ground.
- ❖ Anti-rust and anti-corrosion.
- ❖ Durable and well structured.
- ❖ With competitive price.
- ❖ Bright colored with aesthetic effects.

### “ Application

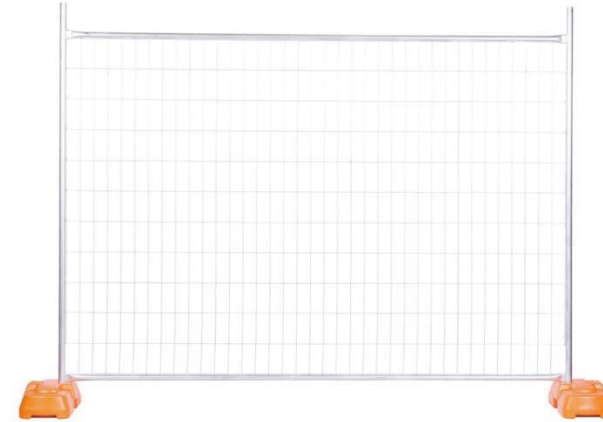
- ❖ Construction Sites pipes and apartments
- ❖ School Board Portable site safety
- ❖ Isolation site Security
- ❖ Residential Construction Sites
- ❖ Restoration and Fire Damaged Sites
- ❖ Special Events (Concerts, Festivals, Cultural, Parades and Sporting Events).

The popular temporary fence are Canada type,Australia type,American type, Europe type,others can be customized.

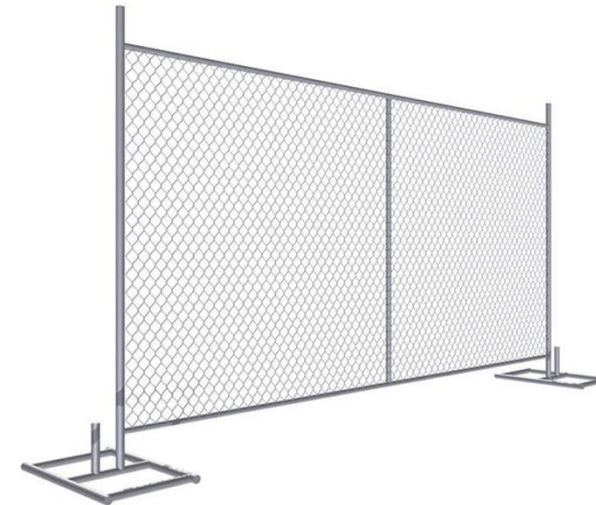
### “ Canada type



### “ Australia type



### “ American type



## “ Europe type



## “ Specification

## “ Canada type

Specification of Fences	
Panel size(mm)	6ft H)*9ft(L),6ft(H)*9.5ft(L), 6ft(H)*10ft(L)
Opening (mm)	50x100 / 50x150 / 50x200 /60*150 / 75x150
Wire Dia(mm)	3 /3.5 /4 mm
Panel Frame(mm)	25*25,30*30 etc. Thickness :1.2, 1.5, 1.6 ,1.8,2.0
Middle beam	19*19,20*20,25*25 Thickness :1.2, 1.5
Steel feet	760x90x5mm,860x90x8mm
Top clip	Welded by round tube or square tube
Finishing of fence	hot-dipped galvanized then paint, galvanized then Powder coated,hot dipped galvanized
Note: The fence can be customized according to your required if above specification is not satisfied with you.	

## “ Australia type

Specification of Fences	
Panel size(mm)	1800(H)*2100(L),1800(H)*2400(L), 2100(H)*2400(L)
Opening (mm)	50x100 / 50x150 / 50x200 /60*150 / 75x150
Wire Dia(mm)	3 /3.5 /4 mm
Panel Frame(mm)	Φ32,Φ38 ,Φ42,Φ48 Thickness :1.2, 1.5, 1.6 ,1.8,2.0
Fence stay	1500mm,1800mm high
Fence feet	Plastic feet 600*220*150 or steel feet
Fence clamp	Pitch 75 or 100
Finishing of fence	hot-dipped galvanized then paint, galvanized then Powder coated,galvanized material welded then paint welds
Note: The fence can be customized according to your required if above specification is not satisfied with you.	

## “ American type

Specification of Fences	
Panel size(mm)	6ft H)*8ft(L),6ft(H)*9ft(L), 6ft(H)*10ft(L),6ft(H)*12ft(L)
Opening (mm)	50x50 / 60x60 / 75x75mm chain link mesh
Wire Dia(mm)	2.5-4.0mm
Panel Frame(mm)	Φ 32mm, Φ 38mm, Φ 42mm,etc. Thickness :1.2, 1.5, 1.6 ,1.8,2.0,2.5
Middle beam	Φ 25mm, Φ 32mm,etc. Thickness :1.2, 1.5, 1.6 ,1.8,2.0
Steel feet	Flat bar base:750mm L x 100 W x 8.0mm O.D. Tube base:30" length x 18" width x 8" Height /762mm x460mm x203mm, (32mm)
Finishing of fence	hot-dipped galvanized then paint, galvanized then Powder coated,Hot dipped galvanized
Note: The fence can be customized according to your required if above specification is not satisfied with you.	

## “ Europe type

Specification of Fences	
Panel size(mm)	2050(H)*3450(L)
Opening (mm)	43x262 / 100x262
Wire Dia(mm)	Horizontal wire:3.2mm,vertical wire:2.2 mm
Panel Frame(mm)	Horizontal pipe:Φ25,vertical pipe:Φ38 Thickness :1.2, 1.5,2.0
Fence feet	Plastic feet 770*200*120 or steel feet
Finishing of fence	hot-dipped galvanized then paint
Note: The fence can be customized according to your required if above specification is not satisfied with you.	

## “ Electric Fence



## “ Regular Feature

Electric fencing provides a formidable physical and psychological barrier against intruders. At HT-Fence Security Solutions, we design and install electric fence systems that not only deter potential intruders but also integrate with your broader security infrastructure.

Our electric fencing solutions are designed with safety in mind, complying with all relevant regulations while providing maximum security for residential, commercial, and industrial properties across all over the world.

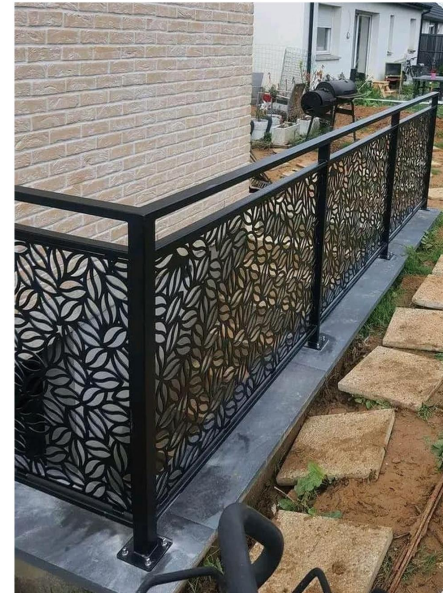
## “ Specifications

- ❖ Powerful deterrent against intruders
- ❖ Immediate alarm notification upon breach attempts
- ❖ Integration with other security systems
- ❖ Compliant with safety regulations
- ❖ Energy-efficient design with backup power options
- ❖ Professional installation and maintenance



“

## Metal Decorative Fence & Screen



“ Gate

“ Pedestrian Gate



“ Swing gate





“ Sliding Gate



“ Sliding Gate

